

GreenKICs

(Green Knowledge and Innovation Communities)

*Call for proposal EIT-KICS-2009
Knowledge and Innovation Communities*

Project draft

**Priority area :
Climate change mitigation and adaptation**

« *Thierry Picquet ,23/06/2009* »
(*tp@b150.com , thierry322@gmail.com*)





Prepare

EIT Knowledge and Innovation Communities (KICs)

- webs of excellence
- integrating the whole innovation web: crosslinking education and research to business and entrepreneurship
- co-locating people
- high profile partnerships
- promoting new business creation and developing entrepreneurship
- world leaders in their field
- with strong economic and societal impact

Answer

Potential KIC partnerships are invited to reply to the call for proposals

Proposals for KICs must ...

- be novel and attractive
- have clear business and co-location plans, clear milestones and an IPR policy
- include a strong and well-structured leadership and governance

The beginning of the twenty-first century marks a turning point concerning political and economic leaders environmental consciousness, by recognizing them as urgent and vital. New phenomena and events have attracted the attention of audiences throughout the world and especially governments.

Everywhere on Earth, there are extreme weather events like Hurricane "Katrina" that destroyed New Orleans, abnormally high temperatures in Europe, India, Americas, or abnormally low, eg up to -3° below the minimum during winter 2001 in the Siberian Republic of Yakutia and spring floods that have claimed more than 300 0000 sinistrés including 14 000 in the city of Lensk. It is becoming increasingly evident that those phenomenas are not accidentals.

The results of scientific research on climate change led to a consensus with explicit conclusions. It is thus commonly accepted that the main part of the climate changes observed during the last decades result from the human activities. The main prospective models on climate change assess that the average temperature will increase between 2 and 6 degrees Celsius over the next 100 years, without all the effects being able to be completely specified.

It is in this context that in 2007, the IPCC (Intergovernmental Panel for Climate Change) received the Nobel Prize and that in February 2008, the Stratigraphy Commission of the Geological Society of London has formally proposed to consider that in geological term, due to the influences of man on Earth, we are now, after the Holocene period, in a new geological era: the *Anthropocene*. In geopolitical terms, some have termed this new stage in the history of humanity as *Planetarisation*.

If humanity wants to survive in reasonable conditions, it must adapt very quickly.

The time scale is about 50 years before an irretrievable situation appears : breakdown of local social, national and international relations in a context of radical global environmental changes.

The organizational system of free trade will eventually survive, but the system of political and economic organization will no longer fit its actual patterns.

Unemployment will increase, leading to regular islands of extreme poverty and civil wars.

Zones of lawlessness will spread, where peoples will gathered together to survive under the control of lawless groups structured by the dominant powers of enforcement. To international structured relations will substitute a growing entropy with new private players with tribal interests.

This does not mean to have a catastrophic point of view without action but to propose solutions.

The project presented here is part of the international goals for reducing greenhouse gases emissions, especially the Kyoto Protocol and its prospects with the Copenhagen conference.

GreenKICs purpose is to develop a strong network of innovative process organized around ontological knowledge based on a solid business plan with links from innovation to civil society.

The informations concerning the KIC in the call for proposals are the followings ones :

A KIC is a collaborative partnership, a legally and financially structured and managed entity of internationally distributed but thematically convergent parties. The KIC will establish an innovation chain - from education to economic impact - drawing on, but moving beyond the experience and capabilities of individual parties. A KIC will deliver measurable societal, economic and entrepreneurial learning and business impact. Specific activities of a KIC are to:

- address long-term challenges in the themes and identify and tackle new opportunities for innovation in Europe;
- transfer higher education, research and innovation activities to the business context and commercial and societal applications (stimulating innovation in large firms as well as creating spin-offs and start-ups and supporting SMEs);
- attract, keep and work with partner organizations and top-class talent from around the world;
- develop entrepreneurial people and bring them to business;
- maximize the share of financial contribution from the private sector;
- address leading innovation-driven research essential to the KIC objectives ;
- set up new schemes of innovation-focused education through EIT-branded master, doctorate and post doctorate education.

Partners: The activity of a KIC must involve at least 3 independent partner organisations. The partners must be established in at least 3 different EU Member States and must include at least one higher education partner and one private company. New partnerships are encouraged. Subject to the approval of the Governing Board, KICs may also include non-Member State partners where this strengthens the KIC.

Co-location centres : KICs will be characterised by geographically distributed people who are brought together for significant periods to work in centres where individuals from different types of organisations and cultures (nationalities, industry, academia, research etc) are co-located in significant parts of the innovation chain (co-location centres). This co-location of people will allow stakeholders to work together face-to-face and move forward effectively towards KIC goals. The co-location centres are expected to be the lead nodes amongst a much larger number of partners in the network. It is anticipated that KICs will typically involve four to six co- location centres or lead nodes. Where an exceptional case for this is made, applications involving more than six may be considered.

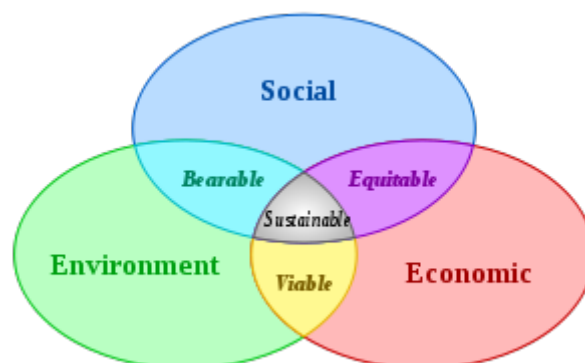
Notwithstanding geographical co-location, all necessary means should be used to ensure a continuous linkage between all the partners in the KIC.

Finance and budget : In order to have a significant European impact a KIC should rely at cruising speed on a total spending of at least 50-100 million € per year. The KICs may be financed for up to 25% of its global expenditure over the first four years through the EIT budget, drawing in the rest through other sources of financing (e.g. co-funding from European funds). Whilst the full 75% from non-EIT sources is not expected to be in place on day one of the KIC, the application must include a robust plan to demonstrate commitments to ensure sustainable and long-term self-supporting financing including a substantial contribution from businesses.

GreenKICS proposes to develop a community of innovative knowledge in order to make concrete and rapid responses to the problems of planetary mutation and climate change.

It's thus then :

- To develop a system of **inter-operable self-knowledge accumulation** based on electronical semantics in order to create ontologies and multilingual multimedia documents standard markup scientifically organized allowing the coexistence of free content rights and commercial solutions (TEI / XML and standards);
- To develop **open source tools** for calculating carbon emissions and modeling the **environmental footprint** of economic, political and social activities;
- Develop educational eLearning **formations** for long life learning (both sectorial and thematic training) and for students from childhood to LMD with the aim of rapid acquisition of empirical knowledge concerning the climate change implications;
- To **disseminate innovative knowledge**, innovative applied technologies, and the develop entrepreneurship and leadership in innovation and environmental societal behavior;
- To build **long-term partnerships** with multinational companies concerned about their image and also aware of the impact of environmental problems on their future, SMEs and emerging innovative structures;
- To **cooperate with States and international organizations**.



The objective is a financially balanced economic growth, maximizing the contribution of the private sector, based on the creation of a chain of innovation in high value added between research and the use of innovative technical and social habits to fight against global warming and its consequences.

The main areas of the business plan is then based on the articulation of 3 branches :

I. Calls for proposals & Consulting

- Answering to international calls (UE, World Bank, International institutions, States, local authorities, public corporations and similar, etc.);
- The development of consulting activities related to climate change, adaptation and economic development options with public and private sectors (calculations of emissions reduction proposals, environmental communication and marketing, etc.).

II. Formation, e-Learning, communication & contents

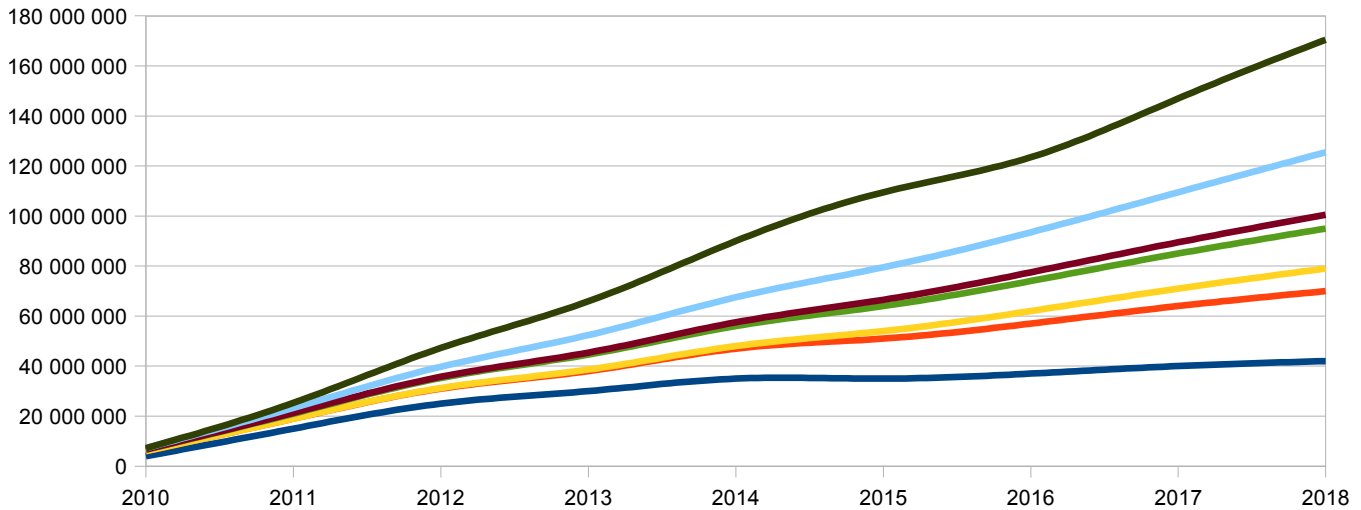
- The dissemination of knowledge through Licenses-Masters-Doctorate (LMD Cycle - Bologna Process) eLearning and in attendance - after receiving the necessary authorizations (also in the form of white brand for other universities and schools around the world)
- The development and sale of professional training (long life learning) on all subjects links with climate change, including "resolutics" proposals in attendance & e-Learning (including white brand);
- The establishment of a communication network on climate change with high added value informations in both education and private sector (insurance, banking, etc.) places funded by subscription and advertisement.

It is therefore to work around the development of innovative pedagogy focusing on making multilingual structured digital corpus accessible according to plural and standardized semantic according to the eLearning standards (ISO/IEC-JTC1-SC36) multimedia (ISO/IEC-JTC1-SC29), terminology (ISO/TC37), ontologies (OWL) and digital libraries (TEI and OAI) with the aim of creating sustainable value added.

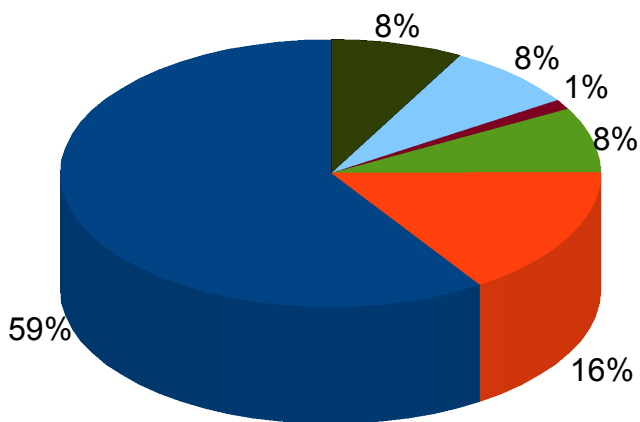
III. Tools, patents and financial participations

- Commercial tools and application for calculating carbon emissions, modeling and mapping (including online);
- Seed capital and private equity investments in technological solutions from research laboratories in Europe and the resale of shares and patents;

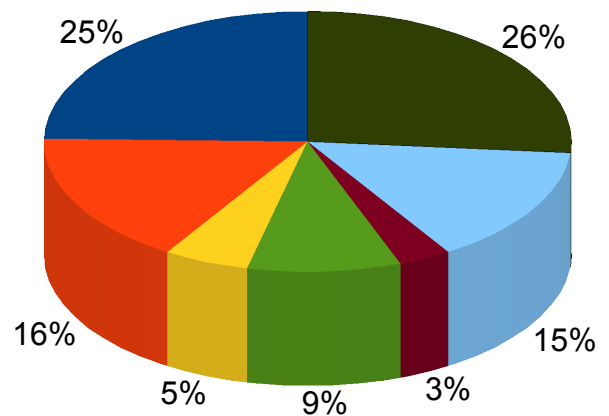
Projected turnover 2010 – 2018 (cumulative)



- Answer to international calls
- Consulting, calculation tools and modelization
- Cursus Licences Masters Doctorats
- Long Life Learning
- Multimedia contents and advertisements
- Tools, patents and commercial partner-
- Seed Capital and Private equity returns



2011



2018

Annexe : liens internet

General informations Web page Call for Proposals EIT-KICS-2009 – Knowledge and Innovation Communities (<http://eit.europa.eu/kics-call.html>)

The EIT has launched its first call for proposals on 2 April 2009.

The deadline for proposal submission is 17.00, 27 August 2009 (Brussels time).

The full call text is available at: Call for proposals EIT-KICS-2009 – Knowledge and Innovation Communities (http://eit.europa.eu/fileadmin/Content/Downloads/PDF/kics/KICS_call_2009_04_02.pdf)

Only proposals submitted electronically through the EIT proposal submission system will be accepted. To register, please use the link below:

[Proposal Submission is not possible until May 2009. Please check this page on 5 May 2009 for further information]

Further guidance on proposal preparation and submission is available at : **EIT-KICS-2009 - Proposers' Guide** (http://eit.europa.eu/fileadmin/Content/Downloads/PDF/kics/Proposers_Guide_2009_04_02.pdf)

Proposals should take into account the **EIT IRP Guidelines**.
(http://eit.europa.eu/fileadmin/Content/Downloads/PDF/kics/IPR_Guidelines_2009_04_02.pdf)

Any questions on the EIT or the KICs call may be submitted here
(<http://eit.europa.eu/nc/metanavigation/contact.html>)

Before signing the declaration in Part D of the proposal, partners should be aware of the situations leading to exclusion as listed in Articles 93 (1) ad 94 of the Financial Regulation applicable to the general budget of the European Communities: **Situations leading to Exclusion**
(http://eit.europa.eu/fileadmin/Content/Downloads/PDF/kics/Situations_leading_to_exclusion_2009_04_02.pdf)

Further information on the KIC selection criteria is available at : **Criteria for the Selection of Knowledge and Innovation Communities (KICs)**
(http://eit.europa.eu/fileadmin/Content/Downloads/PDF/kics/Criteria_for_KIC_selection_2009_04_02.pdf)

Any further information on this call and the KICs will be published on this page which proposers are encouraged to check regularly (<http://eit.europa.eu/kics-call.html>)

